

PHASE II OF *Lincolnwood Estates*

**Comprehensive Community
Solutions, Inc.**

BUILDING HUMAN CAPITAL, COMMUNITIES AND AFFORDABLE HOUSING

CCS Construction, LLC: General Contractor/Builder

**Special
Financing
to Qualified
Buyers!**

Directions:

in Rockford, from West State Street, South onto Pierpont Ave, NE corner of Pierpont and Green



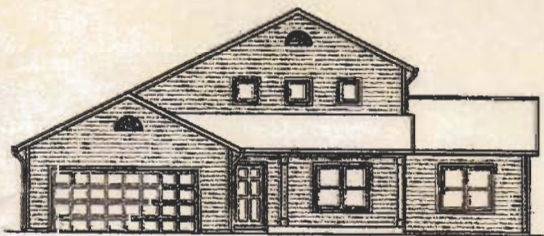
The Springfield

1354 sq. ft. Ranch
3 Bedrooms - 2 full Baths
\$95,000



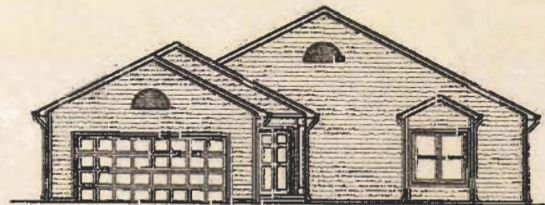
The Heritage

1672 sq. ft. 2-Story
4 Bedrooms - 2 full Baths
\$110,000



The Federal

1662 sq. ft. 2-Story
3 Bedrooms - 2 full Baths
\$107,000



The Constitution

1354 sq. ft. Ranch
3 Bedrooms - 2 full Baths
\$95,000

*Some restrictions apply to some units



Margaret Archer

(815) 988-8821

www.margaretarcher.com

***"I Am Out and About, However, You
Can Reach Me Anytime"***

Century 21.

Country North, Inc.

(815)397-7700